

JVC



SCHEMATIC DIAGRAMS

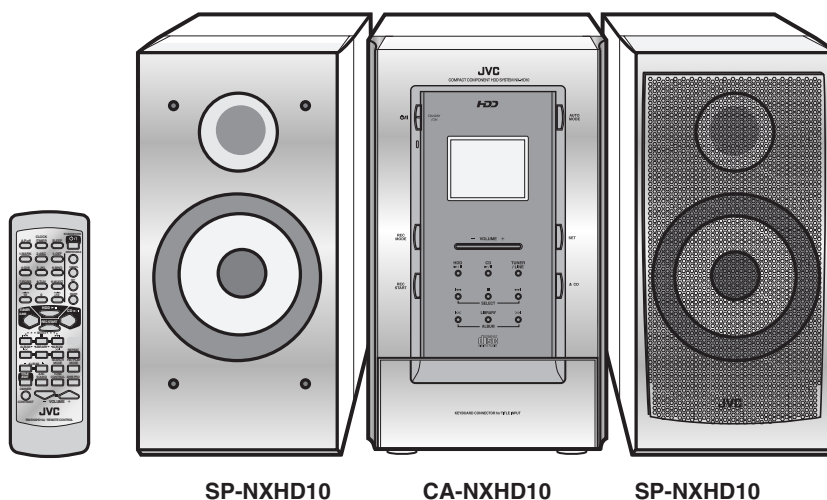
COMPACT COMPONENT HDD SYSTEM

NX-HD10

CD-ROM No.SML200209

Area Suffix

J----- U.S.A.



SP-NXHD10

CA-NXHD10

SP-NXHD10

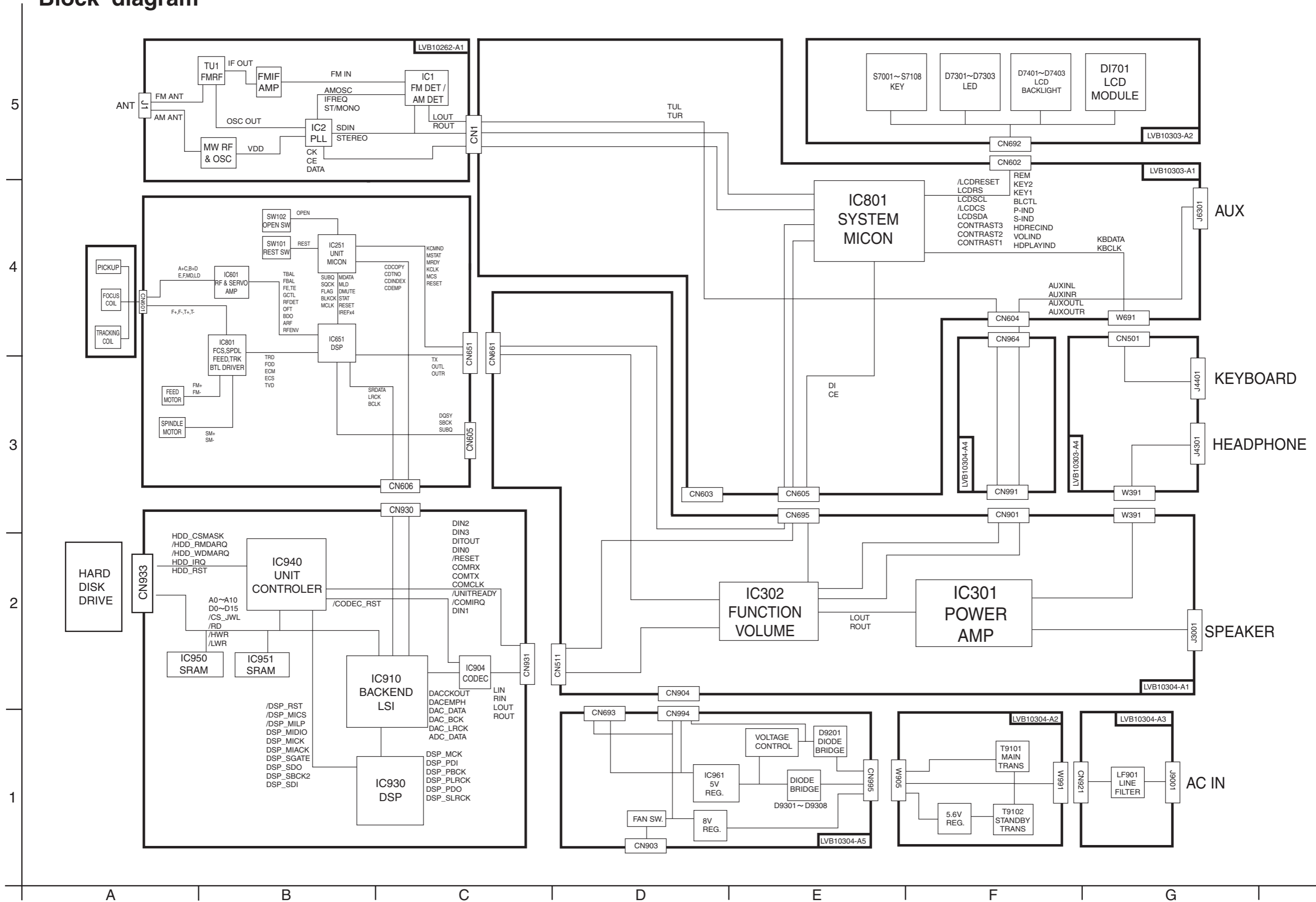
HDD

COMPACT
disc
DIGITAL AUDIO

Contents

Block diagram	2-1
Standard schematic diagrams	2-2
Printed circuit boards	2-7~10

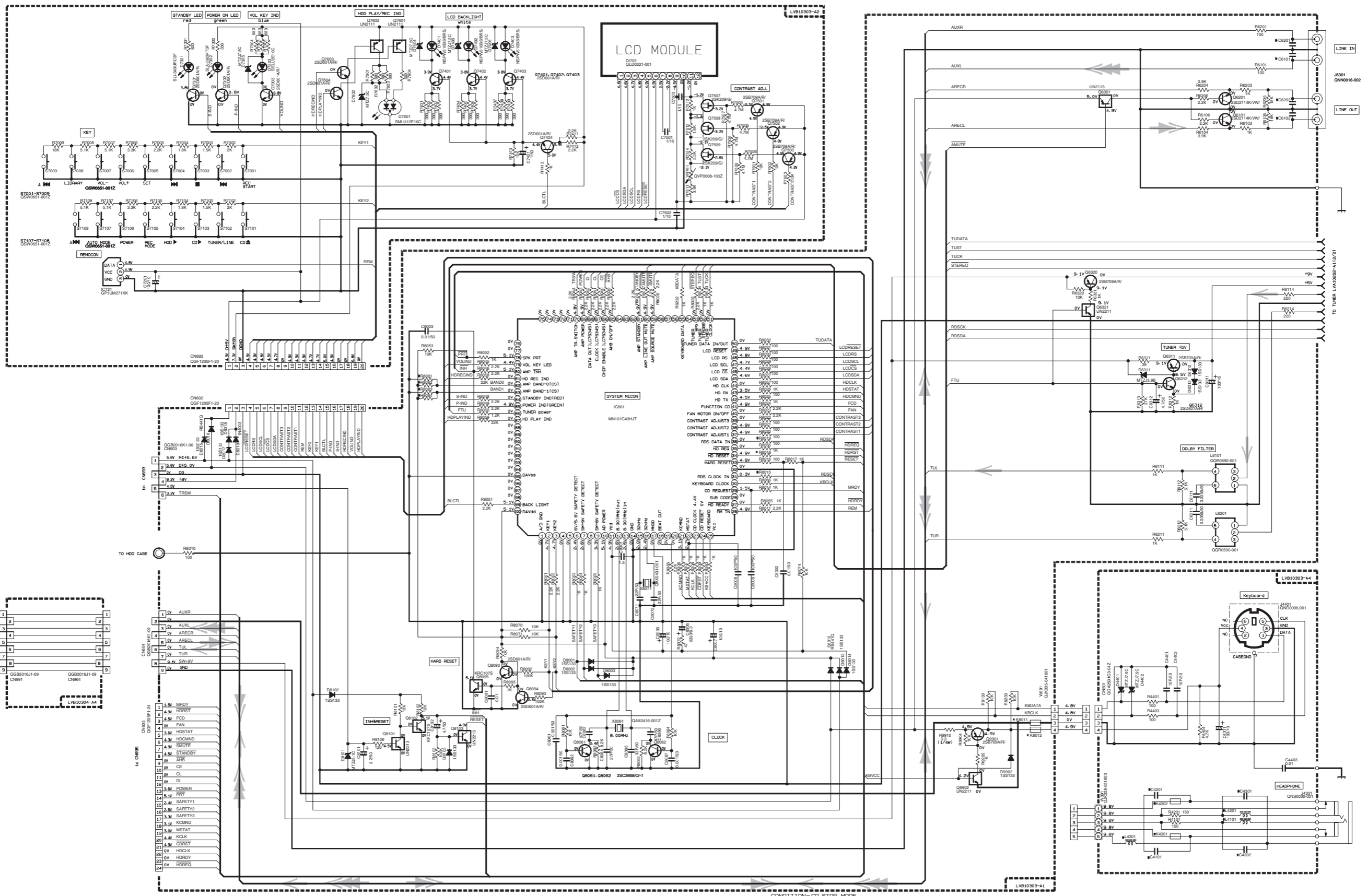
Block diagram



Standard schematic diagrams

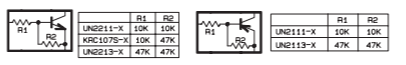
LCD & Key control section

5
4
3
2
1

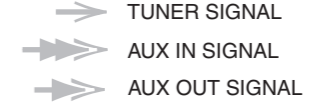


MARKS

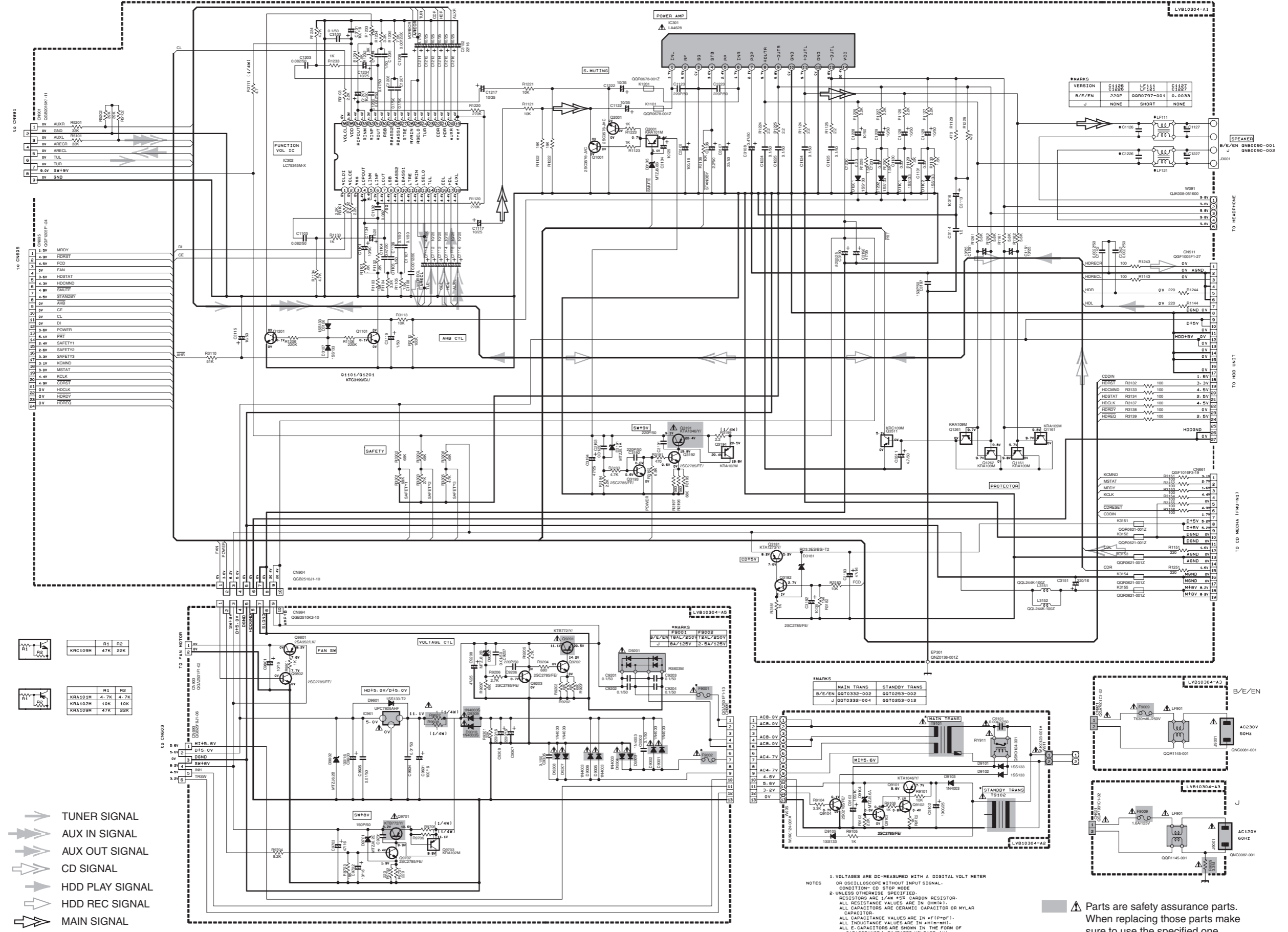
VERSION	REF. NO.	R001	R002	R003	R004	R010	C010	C010	L401	C401	C401	K401	L401	L401
B/V/EN	J	10K	NONE	NONE	2.2K	1K	100P	100P	47	330P	470P	GG0021-0012	SHORT	47



CONDITION-CD STOP MODE
2. UNLESS OTHERWISE SPECIFIED.
RESISTORS ARE 1/16W 5% METAL GLAZE RESISTOR.
ALL RESISTANCE VALUES ARE IN OHM (Ω).
ALL CAPACITANCE VALUES ARE IN OHM (Ω).
ALL CAPACITANCE VALUES ARE IN PICO (P).
ALL INDUCTANCE VALUES ARE IN MILLI (M).
ALL E-CAPACITORS ARE SHOWN IN THE FORM RESET OF INH CAPACITANCE (1/F)/RATED VOLTAGE (V).

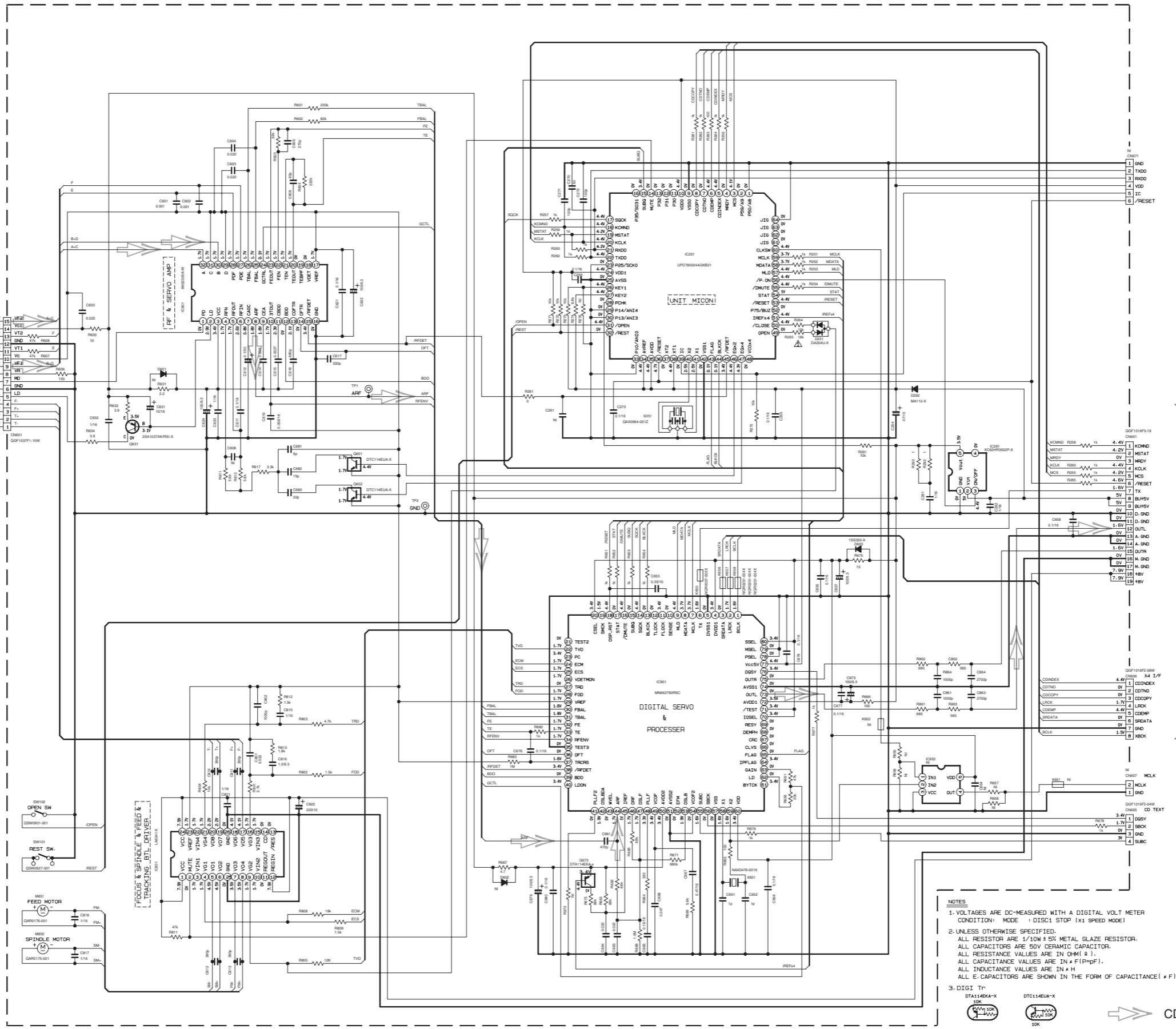
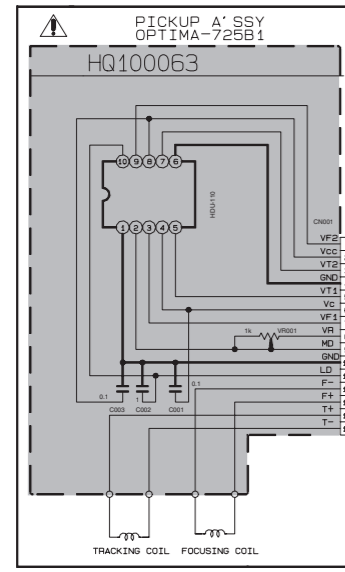


Power amplifier / Power supply section



CD servo control section

5
4
3
2
1



FOR FLASH MICON

TO AMP

- NOTES
1. VOLTAGES ARE DC-MEASURED WITH A DIGITAL VOLT METER
CONDITION: MODE + DISC1 STOP (x1 SPEED MODE)
 2. UNLESS OTHERWISE SPECIFIED.
ALL RESISTOR ARE 1/10W ± 5% METAL GLAZE RESISTOR.
ALL CAPACITORS ARE 50V CERAMIC CAPACITOR.
ALL RESISTANCE VALUES ARE IN OHM (Ω).
ALL CAPACITANCE VALUES ARE IN PICO-FARAD (pF).
ALL INDUCTANCE VALUES ARE IN MICRO-HENRY (μH).
ALL E-CAPACITORS ARE SHOWN IN THE FORM OF CAPACITANCE (μF)/RATED VOLTAGE (V).
 3. DIGI Tr



Parts are safety assurance parts.
When replacing those parts make sure to use the specified one.

A B C 2-4 D E F G

HDD control section

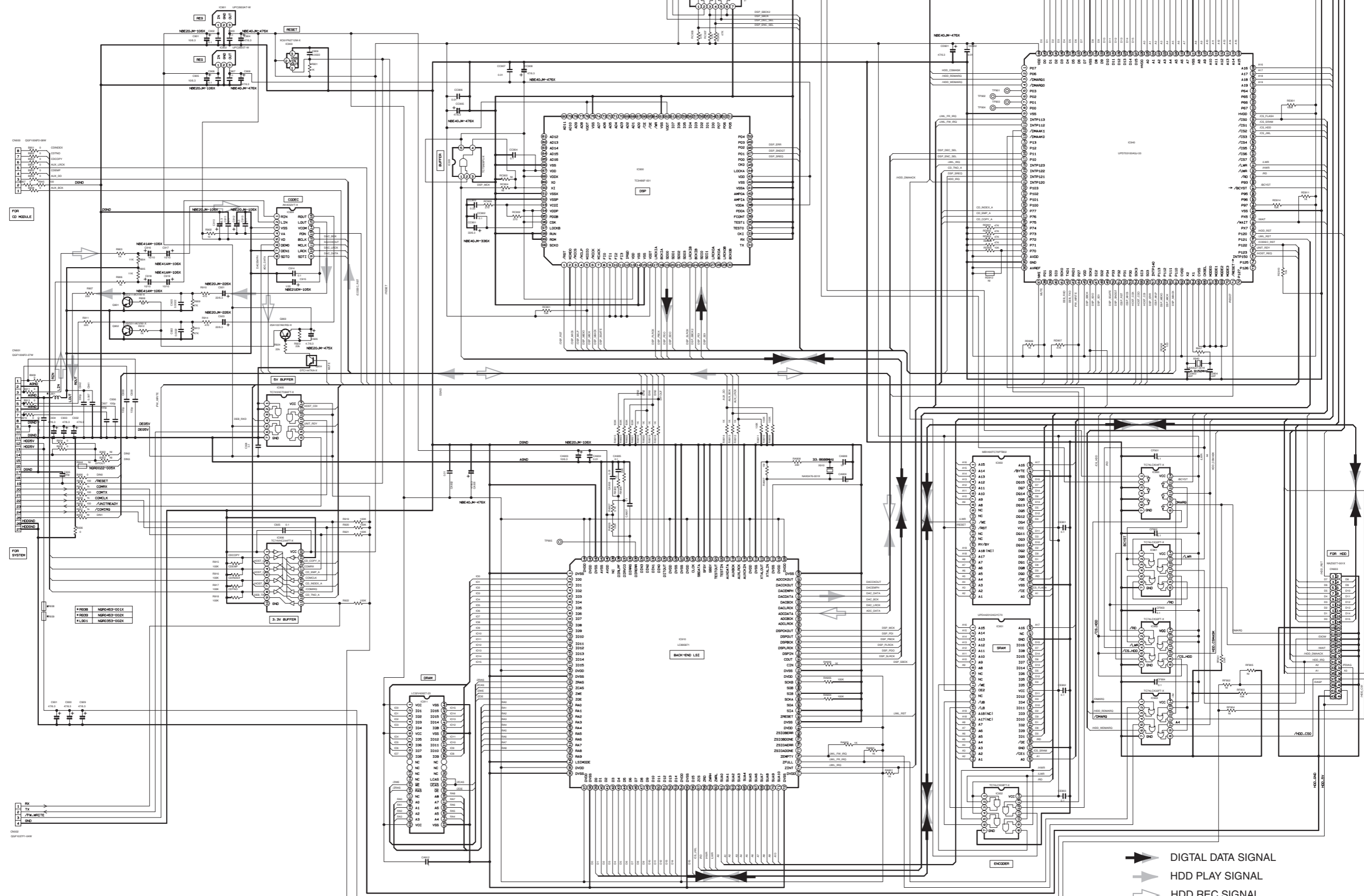
5




4

3

2

1



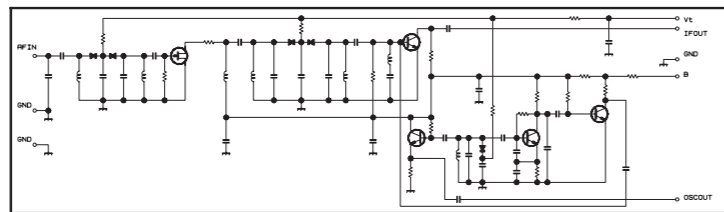
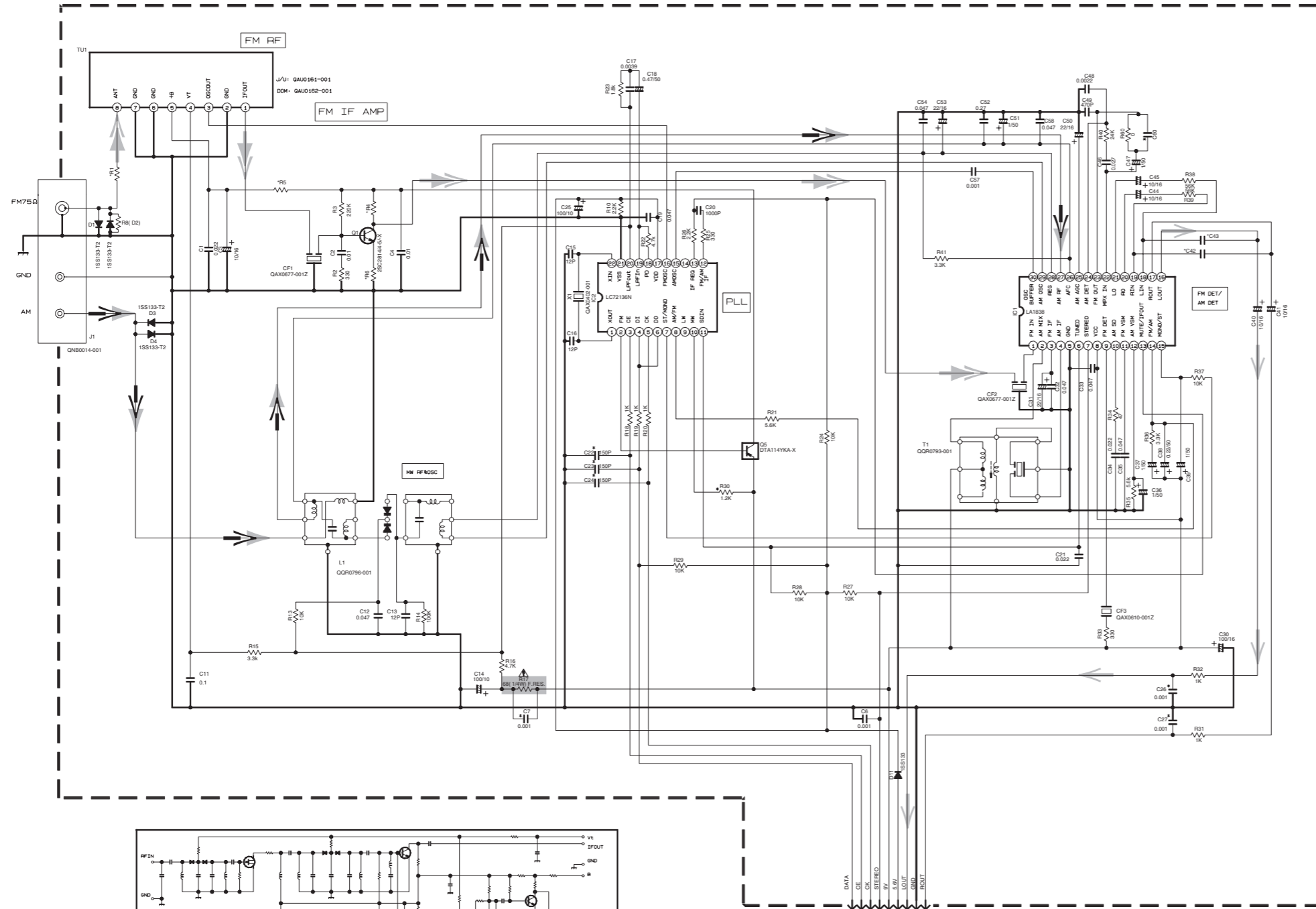
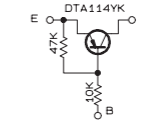
-  DIGITAL DATA SIGNAL
-  HDD PLAY SIGNAL
-  HDD REC SIGNAL

■ Tuner section

NOTES

1. VOLTAGES ARE DC-MEASURED WITH A DIGITAL VOLT METER.
2. ALL RESISTORS ARE 1/8W ±5% METAL GLAZE RESISTOR.
3. ALL RESISTANCE VALUES ARE IN OHM(Ω).
4. ALL CAPACITANCE VALUES ARE IN *F(P=pF).
5. ALL E. CAPACITORS ARE SHOWN IN THE FORM OF CAPACITANCE (*F)/RATED VOLTAGE (V).
6. SI DIODES (▶) ARE ALL 1SS133-T THAT CAN BE CHANGED TO SIMILAR DIODE SUCH AS MA165 OR HSS104J.
7. PARTS NO. OF TRANSISTORS ARE AS FOLLOWS.
Q1 2SC2814/4-5/-X Q2-Q3 2SC2412K/R/-X
Q4-Q5 DTA114YKA-X

B. INSIDE OF DIGITAL TRANSISTORS ARE SHOWN AS FOLLOWS.



	VERSION		
	J/C	User's	SON UX MODEL
C48	0.0022	0.0015	0.0018
C43	0.0022	0.0015	0.0018
R1	560	560	270
R4	331	331	221
R5	560	560	270
R6	240	240	180
R8	D2	D2	101

- ▶ FM SIGNAL
- ▶ AM SIGNAL
- ▶ TUNER SIGNAL

▲ Parts are safety assurance parts. When replacing those parts make sure to use the specified one.

CONDITION	PIN NO.	1	2	3	4	5	6	7	8	9	10	11	12	13	14	15	16	17	18	19	20	21	22	23	24	25	26	27	28	29	30
IC1	FM NO SIGNAL	3.6	8.9	3.6	3.6	0	5.0	5.0	8.9	8.9	1.3	0.1	0	0.9	7.8	7.8	4.3	4.3	4.3	4.3	3.4	3.4	2.8	3.4	0	0	3.5	3.5	3.6	3.6	2.7
	FM 60dB STEREO	3.6	8.9	3.6	3.6	0	0	5.0	8.9	8.9	1.3	4.3	0	0.9	7.8	7.8	4.3	4.3	4.3	4.3	3.4	3.4	2.8	3.4	0	0	3.6	3.6	3.6	3.6	2.7
	AM NO SIGNAL	3.5	9.0	3.5	3.5	0	5.0	5.1	9.0	2.6	1.3	0	0	0.9	4.7	5.5	4.3	4.3	4.3	3.3	3.2	2.8	3.2	0.7	0.7	3.6	3.6	3.6	3.6	2.1	
IC2	FM NO SIGNAL	2.5	0	0	5.0	4.9	5.0	7.9	7.8	3.6	6.1	5.1	0	0	0	0	2.5	5.1	0.9	0.9	3.8	0	2.3								

T _r NO.	Q1				Q5							
PIN NO.	E	C	B	E	C	B	E	C	B			
FM 87.5MHz NO SIGNAL	0	7.1	0.85	8.9	8.8	0						
AM 52kHz NO SIGNAL	0	0	0	9.0	0	8.9						
T _r NO.	Q2				Q3				Q4			
PIN NO.	E	C	B	E	C	B	E	C	B	E	C	B
AM 52kHz NO SIGNAL	0	0	0.7	0	0	0.7	0	3.6	3.6	0.7		
AM 144kHz NO SIGNAL	0	0	0.3	0	0.3	0.3	3.6	3.6	3.6			

5
4
3
2
1

A B C 2-6 D E F G